

Felmersham and Radwell

Footpaths and Photographs

*A map of public rights of way
in and around the villages
with photographs showing
points of local interest*



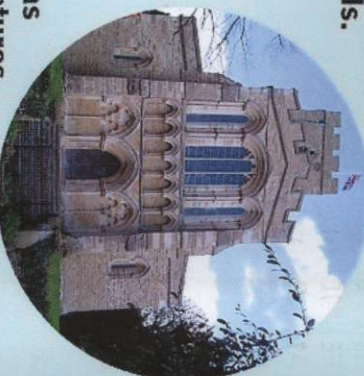
HISTORY

The riverside parish of Felmersham and Radwell in the undulating landscape of north Bedfordshire is bounded to the north and east by a sweeping arc of the river Great Ouse. Each village has a stone arched river bridge, built in 1766 at Radwell and 1818 in Felmersham, both have extended causeways to raise the footpaths above the frequent winter floods.

Millenium Window



*St. Mary's
West Front*



At the centre of Felmersham is the 13th century St. Mary's church with a very fine West Front and lofty interior. The original Early English style has been enhanced by features from other periods, the 15th century oak screen and the recent Millenium window add to the history of the building.

Opposite the church three dwellings now occupy the Tithie Barn built in 1428. Nearby is the Old Rectory in The High Road and along Church End a group of stone cottages leading to the Manor House.

Felmersham Bridge



*Tithie
Barn*



WALKS

Radwell Bridge

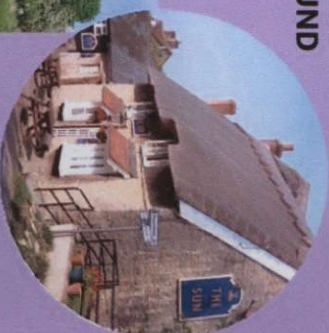


Next to Felmersham bridge is the Jubilee Garden, a grassed area where visitors can sit and enjoy the river and watch boats and canoes being launched from the slipway. This is a good point to start your walks in the area. There are two leaflets available in some local shops, pubs and churches, a **THREE CHURCHES WALK** and **FOOTPATHS AROUND FELMERSHAM AND RADWELL.**

River Ouse to east



*The Sun PH
Grange Road*



You can also use the map on the reverse to make up your own route, perhaps visiting the Nature Reserve. A walk along the river bank, heading east from Felmersham bridge, leads to Pinchmill Islands. A short distance along

Carlton Road a footpath

runs to the river, then

to Odell and the

country park. The

path just beyond

Daisy Bank, via

Green's Spinney,

meets the bridleway

to Pavenham Road,

with some fine views.



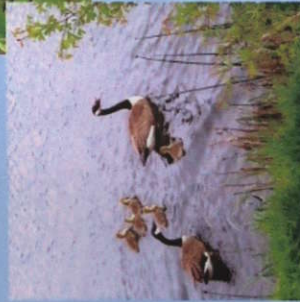
The Swan Inn Radwell

NATURE

*Cowslip
Carpet*



*Young
Family*



The area is rich in plants, birds and other wildlife. Everyone can see the bullrushes and water lilies along the river, and the fish in the many lakes formed by the sand and gravel extractions made over the last sixty years.

Heron statues on the river banks, and large numbers of swans gather in the spring in the fields between Felmersham and Odell and south of Radwell bridge. Muntjac deer are a frequent sighting in the small woods and copses throughout the parish. The meadows have an abundance of wild flowers and many types of butterflies and damselflies.

There is much more for the keen observer, particularly in the nature reserve to the north of Felmersham bridge.



River Ouse to west

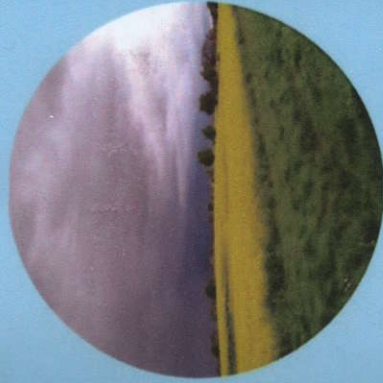
Pollen Collection



*Livestock
Pasture*



VILLAGE LIFE



*Arable
Landscape*

Agriculture used to be the main source of employment but now most work is found outside the parish. Felmersham, population about 550, has retained a village school, designed to double as a village hall with community areas and an adjacent playing field. The Sun pub in Grange Road, a thatched stone building, is the place for visitors to enjoy a drink with local residents.

The smaller village of Radwell, population around 200, has The Swan Inn, ideal for a leisurely meal or pint next to the village green with its collection of thatched cottages. The number of farms has reduced but the mix of arable and livestock farming retains the attractive rural character.

*Stone
Craft*



COUNTRY CODE

Enjoy the countryside & respect its life & work.

Guard against all risk of fire.

Fasten all gates.

Keep your dog under close control.

Keep to public paths across farmland.

Use gates & stiles to cross fences, hedges & walls

Leave livestock, crops & machinery alone.

Take your litter home.

Help to keep all water clean.

Protect wildlife, plants & trees.

Take special care on country roads.

Make no unnecessary noise.



This leaflet was designed & produced by
David Cardy
It is available on www.felmersham.net